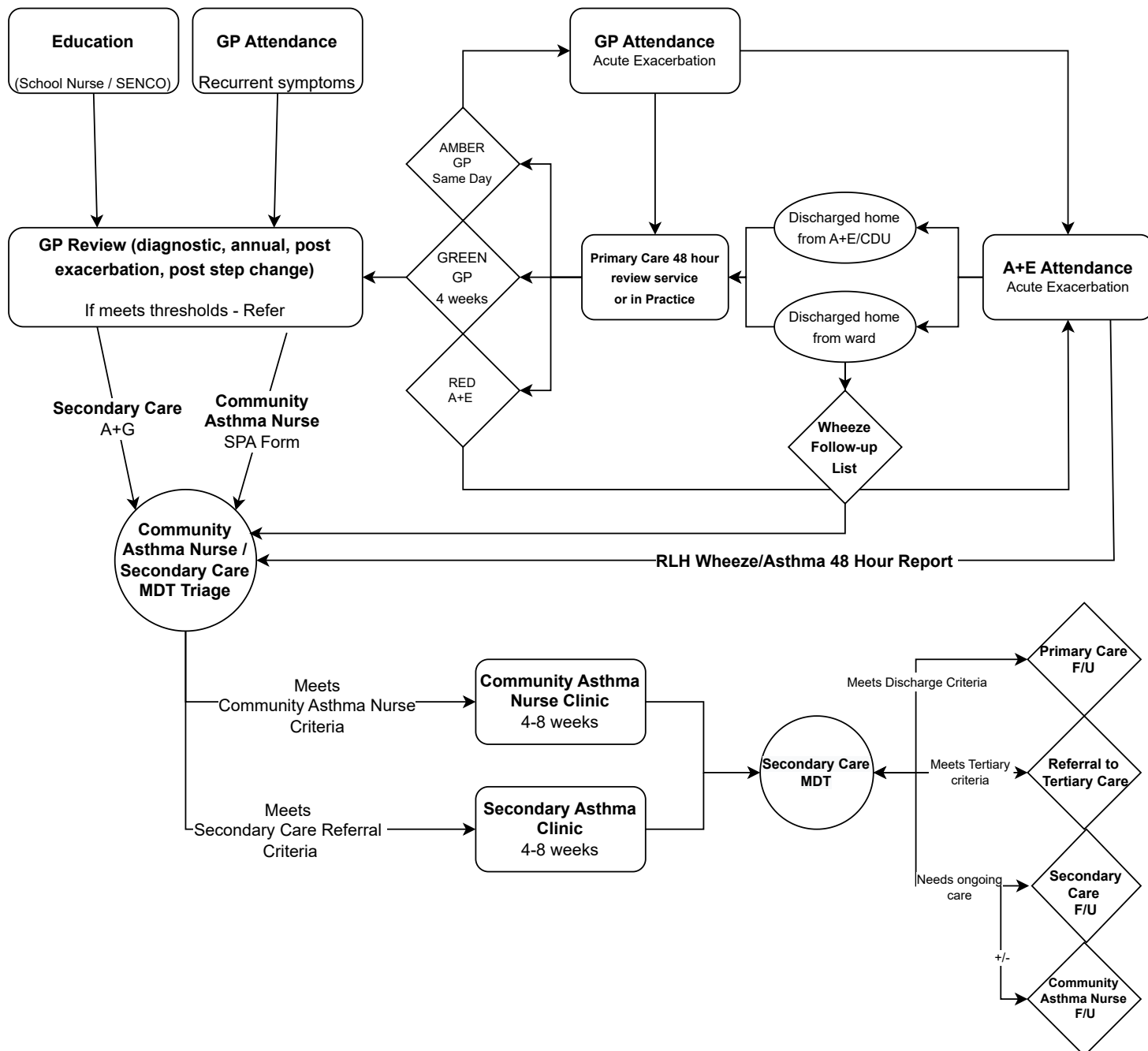


Tower Hamlets Asthma and Wheeze Pathway



School / Community Flags

- Unable to do PE
- Excessive (more than 3 times a week) Salbutamol use at school
- School Absences due to asthma

Community Asthma Nurse Referral Criteria (>5years only)

- ≥ 2 Hospital admission or ≥ 2 exacerbations of wheeze/asthma in the past 6 months (this includes courses of steroids prescribed in primary care)
- Salbutamol over-use (>3 week / >6 inhaler devices a year)
- Poorly controlled symptoms (ACT <19, school missed, exercise limitation)
- BTS Asthma Management Step 4 or above
- Parent/professional concerns about compliance

Secondary Care Referral Criteria

- Patient uncontrolled on moderate dose inhaled corticosteroid (ICS) + LTRA OR ICS+LABA*
- >2 hospital admission in 12 months
- >2 steroid courses in 12 months (dexamethasone or prednisolone)
- Salbutamol over-use (≥3 week / >6 inhaler devices a year)
- Persistent poor control
- School absence due respiratory symptoms
- Uncertain diagnosis
- PICU Admission / IV Treatments (will be triaged direct to Tertiary if needed)

*Seretide 125 TT BD or equivalent, or Seretide 50TT BD (or Beclomethasone 100 TT BD + LTRA, if under 5) or equivalents

Tertiary Care Referral Criteria

- Poor control despite optimised secondary care management
- PICU admission in the previous 2 years
- Maintenance oral steroids for > 4weeks over 12 months
- Unable to reduce to low/moderate ICS to maintain control
- Other reasons to consider referral to tertiary services
 - Complex psycho-social issues
 - Significant safeguarding concerns
 - Specialist breathing pattern assessment required
 - Enrolment in a clinical trial
 - Symptoms persist despite no object evidence of asthma