



North East London

NEEL Community Pharmacy Oral Contraception Webinar – for NEEL Primary Care

27th November 2024

Webinar Overview

- Information on the Community Pharmacy Oral Contraception service
- How to make referrals to the service
- Examples of patients to be referred to the service
- Q&A

NHS Pharmacy Contraception Service



Introduction

The service involves community pharmacists **initiating oral contraception** and **providing ongoing management and supply of oral contraception** which may have been initiated in general practice, a sexual health clinic or a pharmacy.

The aim of the Pharmacy Contraception Service is:

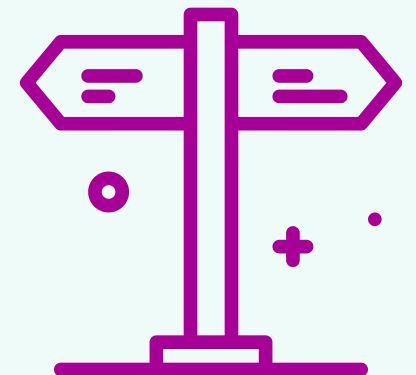
- To offer greater choice from where people can access contraception services
- Create additional capacity in primary care and sexual health clinics
- Help to address health inequalities by providing wider healthcare access for local communities



Accessing the service

Individuals can access the service by any of the following routes:

- Identified as clinically suitable by the pharmacist and accepts the offer of the service
 - e.g. patients who require frequent emergency oral contraception
- Referred by their general practice via **Local Services in EMIS/PharmRefer**
- Signposted/Referred from a sexual health clinic (or equivalent)
- Signposted/Referred from other NHS service providers, e.g. urgent treatment centres or NHS 111.



Providing the service

- **Book appointments / walk ins?**

The pharmacy must respond to anybody requesting the service as soon as is reasonably possible and may choose to offer booked appointments to manage the service.

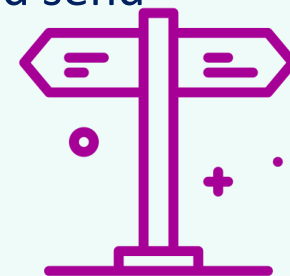
Following initial discussion, if the pharmacy is unable to offer a consultation within the time needed to meet the person's contraception need, patients will be signposted to an alternative pharmacy or other service provider for a consultation.

Contractors would avoid sending patients back to referring GPs, unless with appropriate clinical reasoning e.g. patient is not eligible for this service.

- **Consent is verbal**

Consent must be obtained from patients in order to provide this service

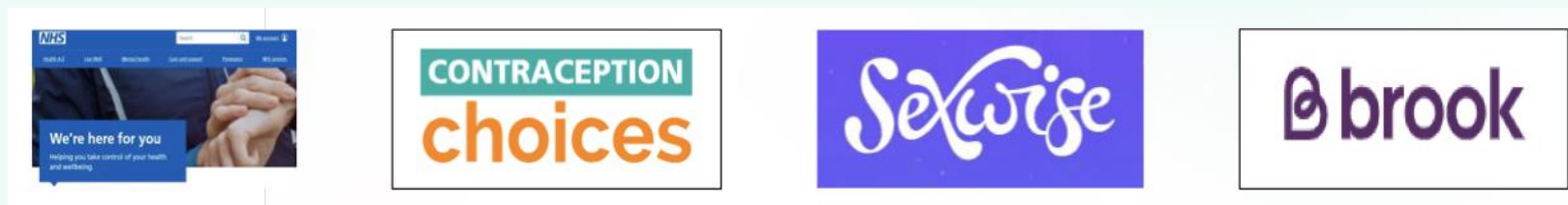
Patients who have been referred by their GPs, consent from patient is still required to share and send consultation outcome with their referring GPs.



Providing the service continued

Consultation

- All consultations are conducted in patient-centered approach
- Use of Online shared decision-making contraception consultation tools
- Pharmacies are recommended to discuss alternative options and and more effective forms of contraception including Long-Acting Reversible Contraception (LARC) and to signpost appropriately
- Initiation – discuss options available with the individual and in-line with the [NEL oral contraception formulary](#)



Providing the service continued

Inclusion Criteria

To **be eligible** to access the service a person must be an individual seeking to be initiated on an OC, or seeking to obtain a further supply of their ongoing OC:

- Combined oral contraceptive (COC) – from menarche up to and including 49 years of age
- Progestogen only pill (POP) – from menarche up to and including 54 years of age

Exclusion Criteria

A person will **not be eligible** for this service if:

- They are considered clinically unsuitable
- Individuals under 16 years of age and assessed as not competent using Fraser guidelines
- Individuals 16 years and over and assessed as lacking capacity to consent

Outcomes

Criteria met - Supply can be made

- ✓ FSRH UK Medical Eligibility Criteria for Contraceptive Use (UKMEC) calculator available to support clinical decision on choice
- ✓ Local ICB formularies/restrictions should be referred to
- ✓ Quantity
- Initiation - quantity **should not exceed 3 months** or ➤ Ongoing supplies of **up to 12 months** duration



Criteria not met - Supply deemed not clinically appropriate

- ✓ Explain
- ✓ Refer appropriately
- ✓ Document the reason for not supplying against the PGD and send the referral to an alternate service provider



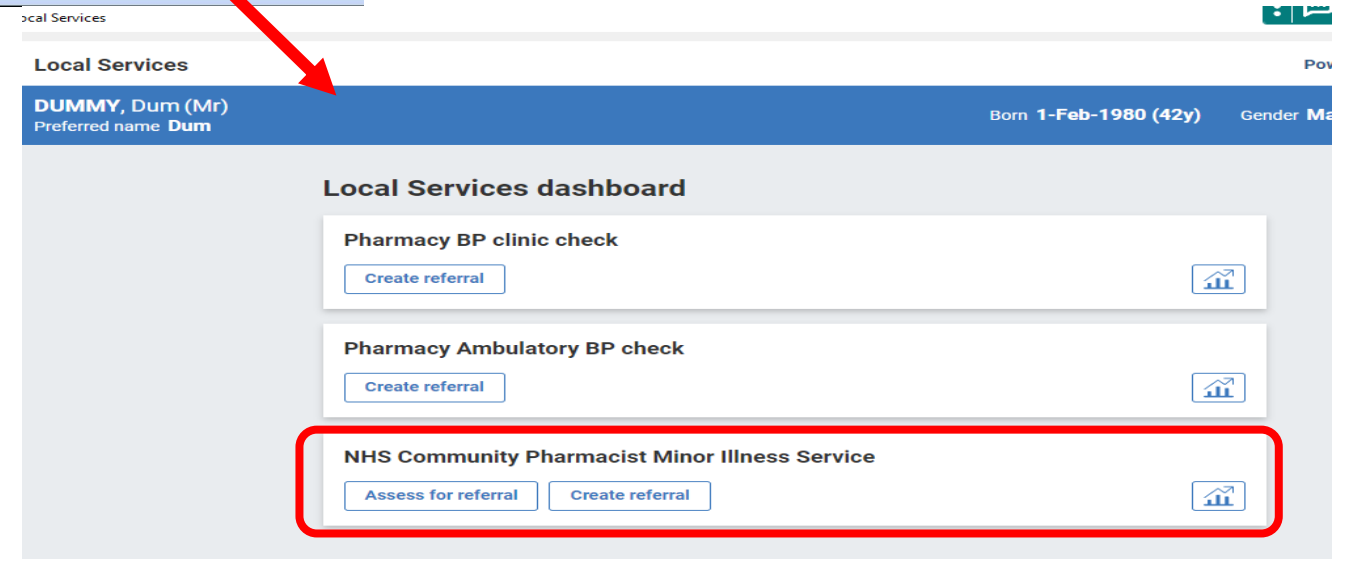
How to make referral to the Community Pharmacy Oral Contraception Service

- All referrals from GPs should be made via '**Local Services**' on EMIS or **PharmRefer** (for practices who do not use EMIS)
- List of pharmacies who provide this service will be auto-populated when making a referral on EMIS 'Local Services', with the closest pharmacy to patient's address by distance
- Patient's consent should be obtained prior to making a referral and the pharmacy where the referral is to be sent to should be the patient's choice

Benefits of making a referral

- Local Services on EMIS/PharmRefer will provide you the most up-to-date list of providers who provide this service
- Patients who has been referred will receive confirmation and detail of the referral - providing patient assurance.
- Pharmacies will be able to contact the referred patients in advance to make arrangements – setting date and time for the consultation
- Consultation outcome of the service will be shared back with referring GPs, provided patient's consent* obtained
- * patient consent prior to referral will facilitate patient consenting to outcome of their community pharmacy appointment being shared with their General Practice

How it shows on 'Local Services' on EMIS



UPDATE: The Oral Contraception Service will be available in Local Services on EMIS from the 2nd December 2024

Examples of patients who would benefit from this service

- Patients who require initiation or on-going supply of oral contraception (where previously initiated in primary care/pharmacy/sexual health clinic) for **contraceptive indication**
 1. Patients who have been stabilised on oral contraception who \pm require a pill check **and** further supply
 2. Patients who have been recently initiated on oral contraception and require a follow up
 3. Patients who are interested in starting on oral contraception
- Age criteria
 - Progesterone only oral contraception – from menarche – 54 years old
 - Combined oral contraception – from menarche – 49 years old

Examples of patients who should not be referred to the service

- Patients < 16 and assessed as not competent using the [Fraser guidelines](#)
- Patients > 16 and assessed as lacking capacity to consent
- Contraindications to oral contraceptives as per PGD protocols e.g. CVD, Cancer, Drug-drug interactions
 - Refer to individual PGDs for the exclusion criteria
 - [PRN00750-pgd-supply-coc-by-community-pharmacists-in-england-v2.0.pdf](#)
 - [PRN00750-pgd-supply-pop-by-community-pharmacists-in-england-v2.0.pdf](#)
- Patients who require oral contraceptives but not for contraceptive indication e.g. endometriosis, polycystic ovary syndrome
- Patients who require non oral formulations of contraception e.g. patches, injectables, intrauterine devices

Further contacts and resources

- [NHS England » NHS Pharmacy Contraception Service](#)
- Practice Training – Pharmacy First, CPSAS, BP check and oral contraception services
- *For Jaspreet Dhaliwal, Pharmacy Services Manager
Focusing on Pharmacy First, Hypertension & ABPM and Oral Contraception in
Redbridge, Waltham Forest, Tower Hamlets and City and Hackney (PCNs: Clissold Park, Hackney Downs and Hackney
Marshes only)
Phone: 07857 903534 Email: jaspreet@cpnel.org*
- *For Shafi Ali, Pharmacy Services Manager
Focusing on Pharmacy First, Hypertension & ABPM and Oral Contraception in Barking & Dagenham, Havering, Newham
and City and Hackney (PCNs: London Fields, Shoreditch, Springfield, Well St, Woodberry Wetlands only)
Phone: 07759 001923 Email: shafi@cpnel.org*
- Further resources available on the portal: [Community Pharmacy Clinical Services – North East London](#) (update in process)
- Any general queries around community pharmacy clinical services, please email nelondonicb.medicinesoptimisationenquiries@nhs.net

Q & A?