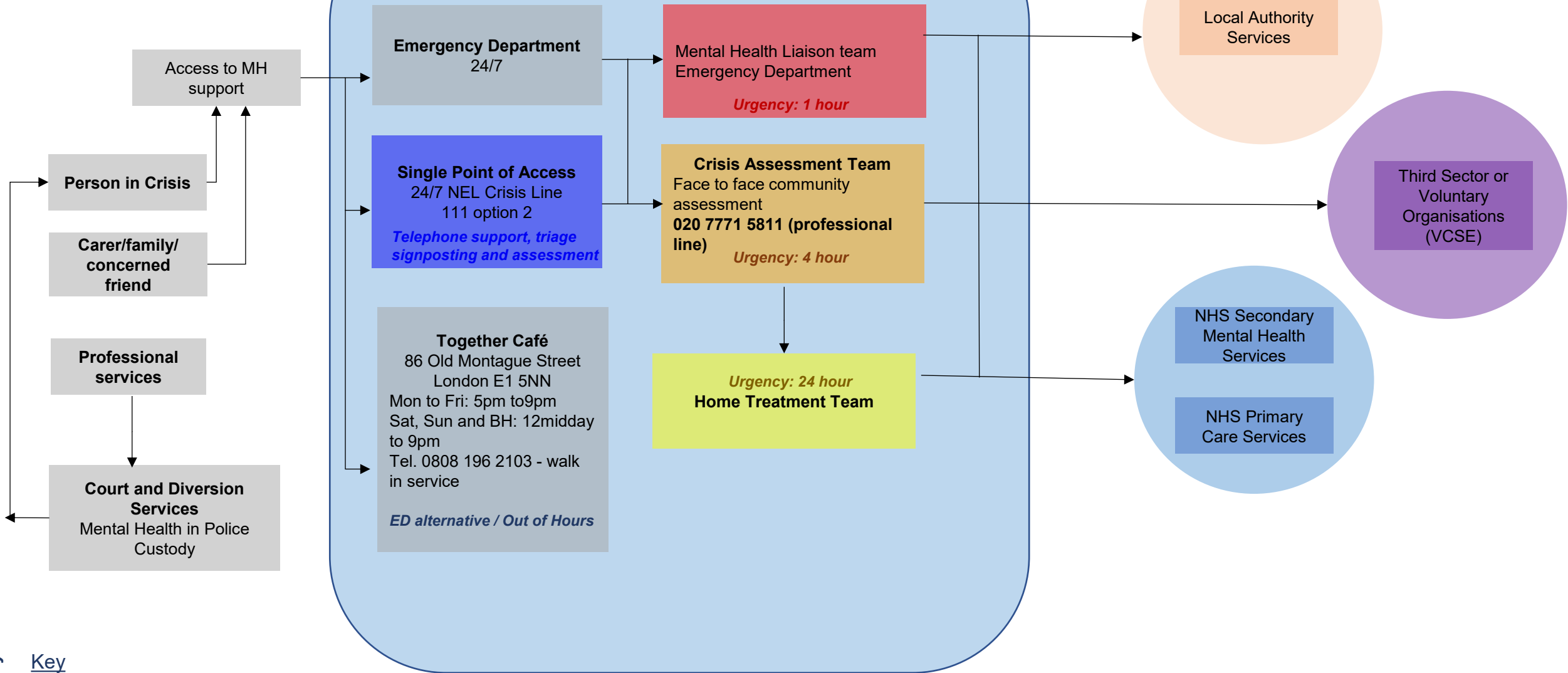


Crisis Pathway: Tower Hamlets

Crisis Pathway



Crisis Pathway Definitions

Key

Objective of the crisis pathway

To agree a crisis plan, provide time limited support and onward referral with a person in crisis.

Emergency: current actions endanger self or others. Examples include overdose, suicide attempt, violent aggression

Very high risk: risk of imminent harm to self and to others. Examples include thoughts of self harm with a plan or means or intent.

High Risk: risk of harm to self or others or high level of distress in the absence of capable support

Together Café (Crisis Café): recovery focused service, an alternative to A/E