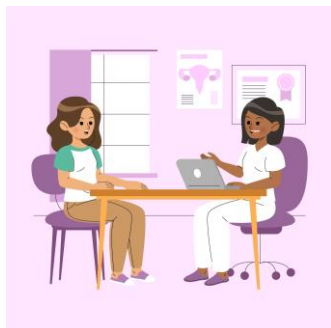


## Menopause



## Urogynaecology



## Social Prescribing



# We are delighted to announce The launch of our Women's Health Hub Ilford Health Exchange

Join us at our virtual WHH engagement event for GPs/ANPs/Allied clinicians/ Community physio/ clinical pharmacist etc. in the Barking, Havering, and Redbridge Region. We will be covering the services we provide, referral processes, and addressing any questions you may have.

## July 10th at 12pm

BHRUT Women Health Hub  
Engagement Event



Register here

Enquiries: [Salaimatu.conteh@nhs.net](mailto:Salaimatu.conteh@nhs.net)

[www.bhrhospitals.nhs.uk](http://www.bhrhospitals.nhs.uk)

[@BHRUT\\_NHS](https://twitter.com/BHRUT_NHS)

Barking, Havering and Redbridge University Hospitals NHS Trust