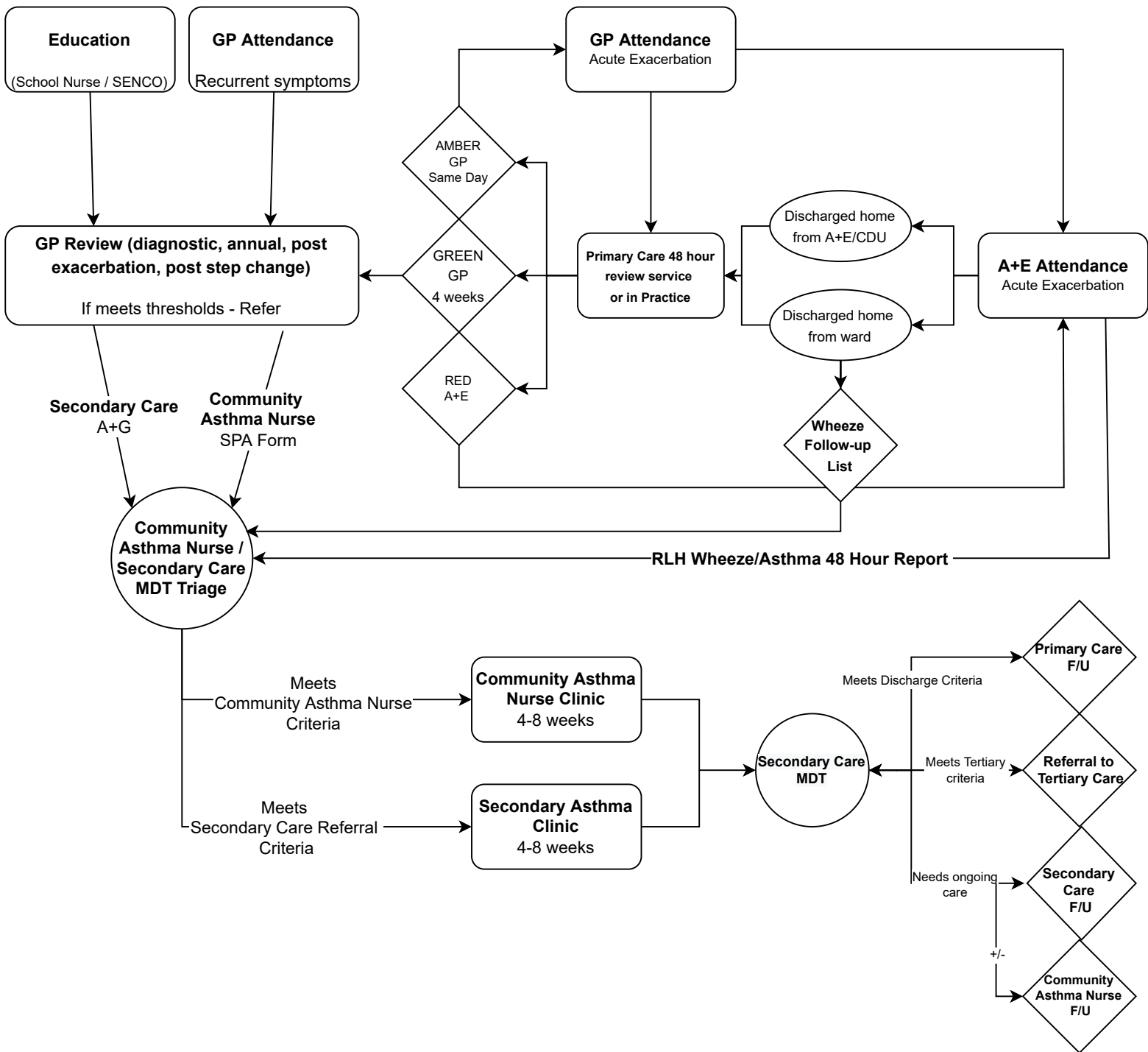


# Tower Hamlets Asthma and Wheeze Pathway



- School / Community Flags**
- Unable to do PE
  - Excessive (more than 3 times a week) Salbutamol use at school
  - School Absences due to asthma

- Community Asthma Nurse Referral Criteria**
- ≥ 2 Hospital admission or ≥ 2 exacerbations of wheeze/asthma in the past 6 months (this includes courses of steroids prescribed in primary care)
  - Salbutamol over-use (>3 week / >6 inhaler devices a year)
  - Poorly controlled symptoms (ACT <19, school missed, exercise limitation)
  - BTS Asthma Management Step 4 or above
  - Parent/professional concerns about compliance

- Secondary Care Referral Criteria**
- Patient uncontrolled on moderate dose inhaled corticosteroid (ICS) + LTRA OR ICS+LABA\*
  - >2 hospital admission in 12 months
  - >2 steroid courses in 12 months (dexamethasone or prednisolone)
  - Salbutamol over-use (≥3 week / >6 inhaler devices a year)
  - Persistent poor control
  - School absence due respiratory symptoms
  - Uncertain diagnosis
  - PICU Admission / IV Treatments (will be triaged direct to Tertiary if needed)

\*Seretide 125 TT BD or equivalent, or Seretide 50TT BD (or Beclomethasone 100 TT BD + LTRA, if under 5) or equivalents

- Tertiary Care Referral Criteria**
- Poor control despite optimised secondary care management
  - PICU admission in the previous 2 years
  - Maintenance oral steroids for > 4weeks over 12 months
  - Unable to reduce to low/moderate ICS to maintain control
  - Other reasons to consider referral to tertiary services
    - Complex psycho-social issues
    - Significant safeguarding concerns
    - Specialist breathing pattern assessment required
    - Enrolment in a clinical trial
    - Symptoms persist despite no object evidence of asthma