

# COVID-19 Therapeutics for Non-Hospitalised Patients – New Pathways and Providers

---

Information for GPs in North East London

September 2023

# COVID-19 therapeutics for non-hospitalised patients - background

- Community-based treatments, which are either oral antivirals or IV neutralising monoclonal antibodies (nMABs) have been accessible to NEL patients since December 2021. They must be delivered quickly following the onset of symptoms (within 5 days).
- The local NEL COVID-19 Medicine Delivery Unit (CMDU) was provided by Barts Health until 30 June 2023 as part of an interim pandemic response. As of 1 July 2023, the provider has changed to **Waltham Forest GP FedNet**.
- The primary referral pathway has also changed from automated identification after a positive LFT or PCR test result to mostly self-referral. NHSE has written to eligible patient cohorts to let them know to contact their GPs, hospital consultants or NHS111 to find out how to self-refer.
- NHS NEL ICB is working on a communications strategy to support patient self-referral without having to contact GPs first.

## COVID-19 therapeutics for non-hospitalised patients – GP role

GPs are asked to either refer, or direct the patient to self-refer, to the new provider, which is Waltham Forest GP FedNet. This part of the process is the same for paediatric (12 – 17 YO) and adult patients.

Contact details of the new provider:

**Waltham Forest GP FedNet**

Telephone - 0203 196 3239

E-mail - [NEL.CMDUreferral@nhs.net](mailto:NEL.CMDUreferral@nhs.net)

As before, the provider will contact patients directly to confirm eligibility, discuss, and if appropriate, arrange treatment.

GPs are **not required** to prescribe any COVID-19 therapeutics. In the rare case of a patient not responding to treatment, NEL CMDU may refer the patient back to their GP for supportive treatment and / or onward referral, if appropriate.

# COVID-19 therapeutics for non-hospitalised patients – eligibility criteria 1 of 2

Eligibility criteria for COVID-19 treatments for non-hospitalised patients who will benefit from them most are as follows:

- aged 12 years or over
- at highest risk of getting seriously ill from COVID-19
- have symptoms of COVID-19, which are not getting better
- have tested positive for COVID-19

Paediatric patients (12-17 YO) will be triaged by the provider in the first instance just like adult patients. However, following initial triage, WF FedNet will refer the patient to the North Thames Paediatric Network. An MDT will review the patient and if suitable for therapeutics, the Network will arrange treatment at UCLH.

The complete commissioning framework is accessible via the link below:

<https://www.england.nhs.uk/coronavirus/publication/commissioning-framework-covid-19-therapeutics-for-non-hospitalised-patients/>

# COVID-19 therapeutics for non-hospitalised patients – eligibility criteria 2 of 2

People at highest risk of getting seriously ill from COVID-19 are those who have certain conditions, including but not limited to:

- Down's syndrome
- sickle cell disease
- HIV or AIDS
- chronic kidney disease (CKD) stage 4 or 5
- certain types of cancer
- had certain types of chemotherapy in the last 12 months
- had radiotherapy in the last 6 months
- had an organ transplant
- a severe liver condition (such as cirrhosis)
- a rare condition affecting the brain or nerves (multiple sclerosis, motor neurone disease, Huntington's disease or myasthenia gravis)
- certain autoimmune or inflammatory conditions (such as rheumatoid arthritis or inflammatory bowel disease)
- a condition or treatment that made them more likely to get infections
- certain lung conditions or treatments for lung conditions

More detailed and complete list and other information can be found here:

- <https://www.gov.uk/government/publications/higher-risk-patients-eligible-for-covid-19-treatments-independent-advisory-group-report-march-2023/defining-the-highest-risk-clinical-subgroups-upon-community-infection-with-sars-cov-2-when-considering-the-use-of-neutralising-monoclonal-antibodies>
- <https://digital.nhs.uk/coronavirus/treatments#who-can-access-the-treatment>

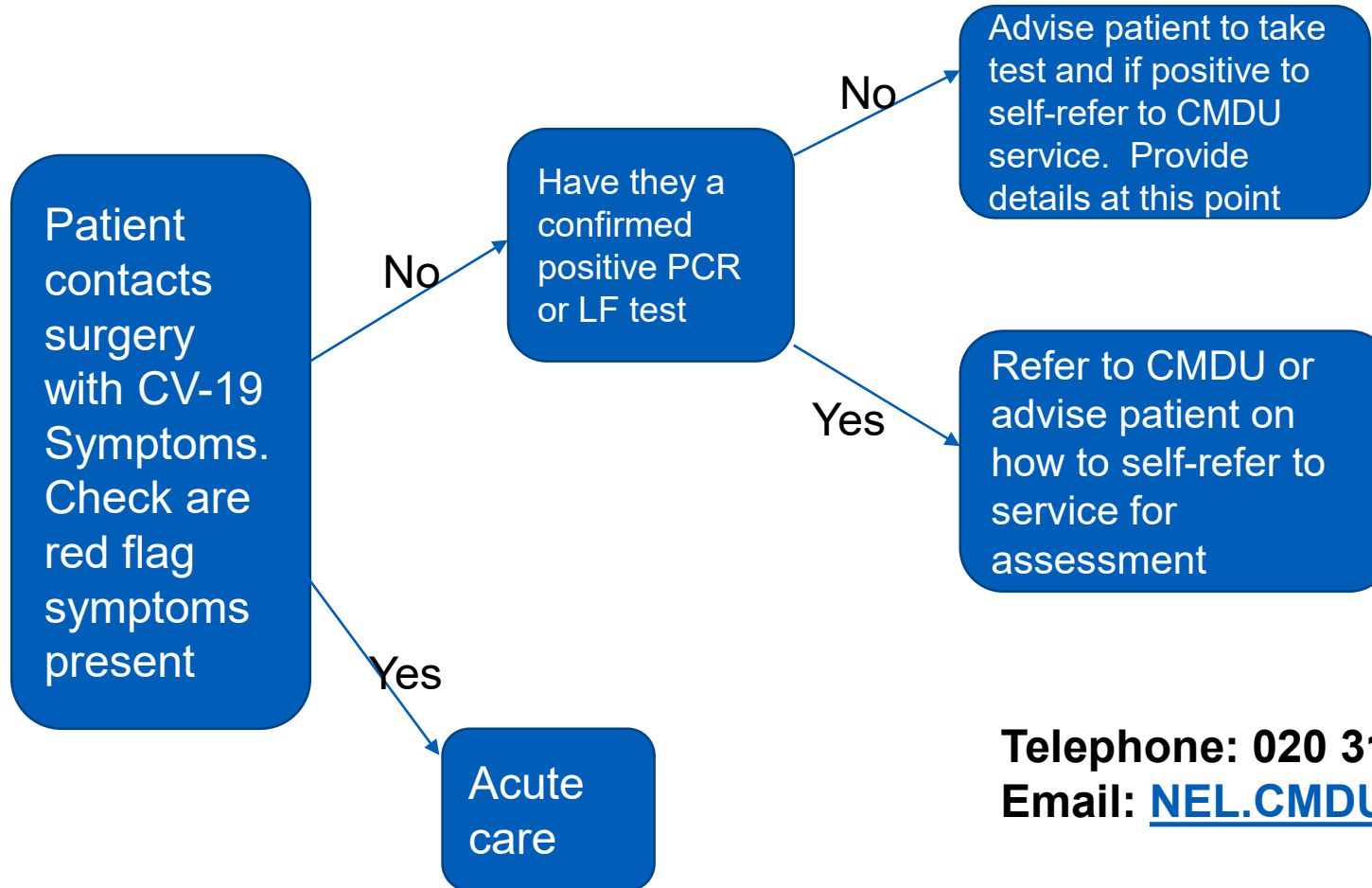
# COVID-19 therapeutics for non-hospitalised patients

The NICE FDG for Therapeutics for people with COVID-19 has been published <https://www.nice.org.uk/guidance/ta878>

The therapeutics now recommended are:

- Paxlovid Oral – outpatient / inpatient (adults)
  - Sotrovimab Intravenous – outpatient / inpatient (12 years and older)
  - Remdesivir Intravenous (if supply available)
  - Molnupiravir Oral (Adults)
- 
- For any general patient queries about COVID-19 treatments, please refer patients to <https://www.nhs.uk/conditions/coronavirus-covid-19/self-care-and-treatments-for-coronavirus/treatments-for-coronavirus/>

# Summary



**Telephone: 020 3196 3239**

**Email: [NEL.CMDUReferral@nhs.net](mailto:NEL.CMDUReferral@nhs.net)**

## COVID-19 therapeutics for non-hospitalised patients – community pharmacies

Four community pharmacies have been contracted to dispense and if needed, deliver the oral therapeutics to patients' homes. GPs or patients will not need to interface with them as this will be done via the FedNet, but the details are shown here for your information:

Britannia Pharmacy	Unit 9 ASDA Precinct East Ferry Road	London	E14 3BT
Maylands Pharmacy	300 Upper Rainham Road	Hornchurch	RM12 4EQ
Leyton Orient Pharmacy	2nd Floor Oliver Road Polyclinic 75 Oliver Road	Leyton, London	E10 5LG
Kingsland Pharmacy	406 Kingsland Road	London	E8 4AA



# Panoramic Trial

- The Panoramic Trial is a national study looking at antivirals in a wider cohort of patients, gathering data on effectiveness of antivirals in a vaccinated population.
- No NEL practices are taking part and the study is not recruiting any new practices. Patients can only take part in the study if their practice is taking part, therefore it is not an option to sign-post patients to at this time.

<https://www.panoramictrial.org/>