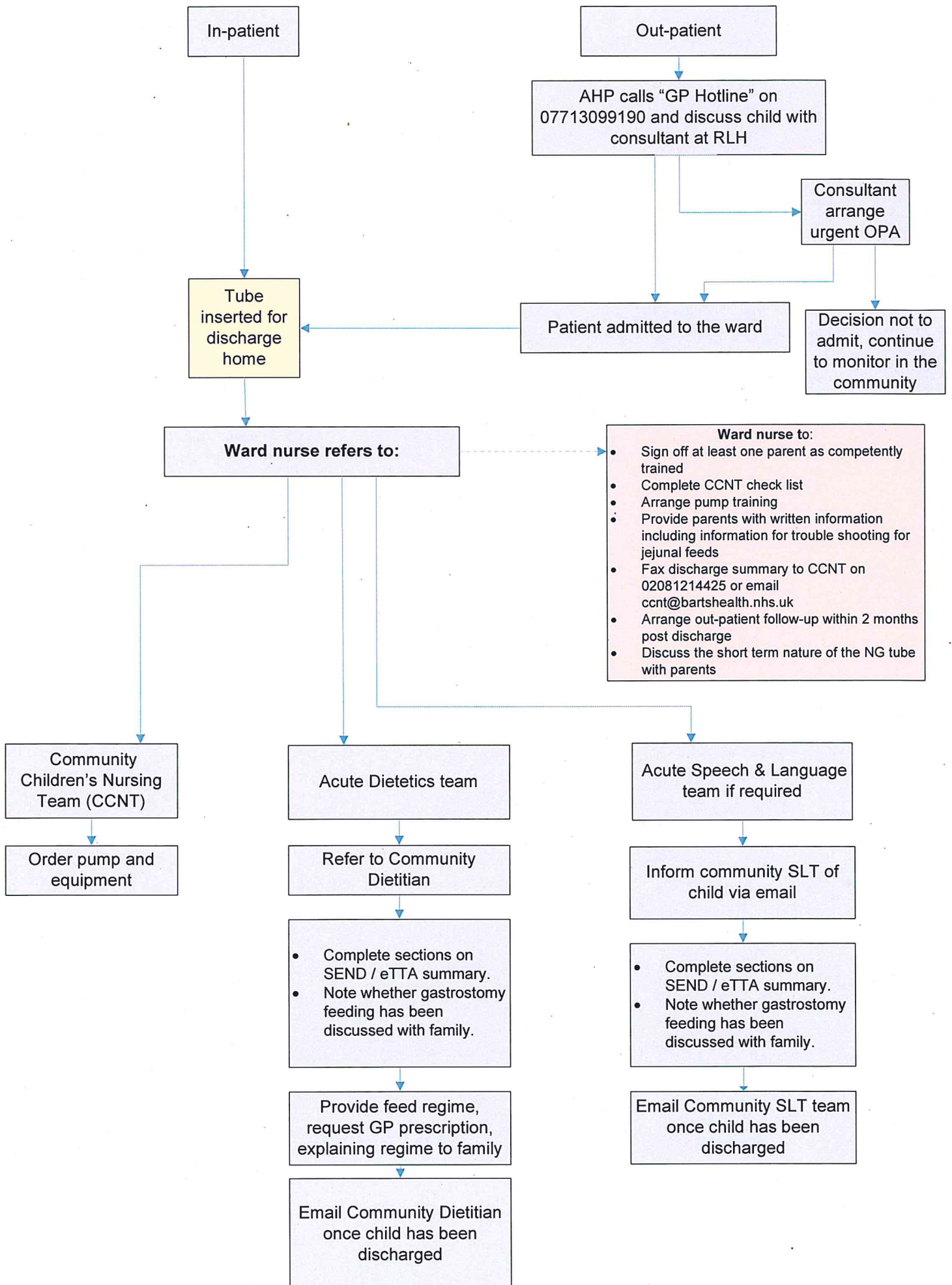
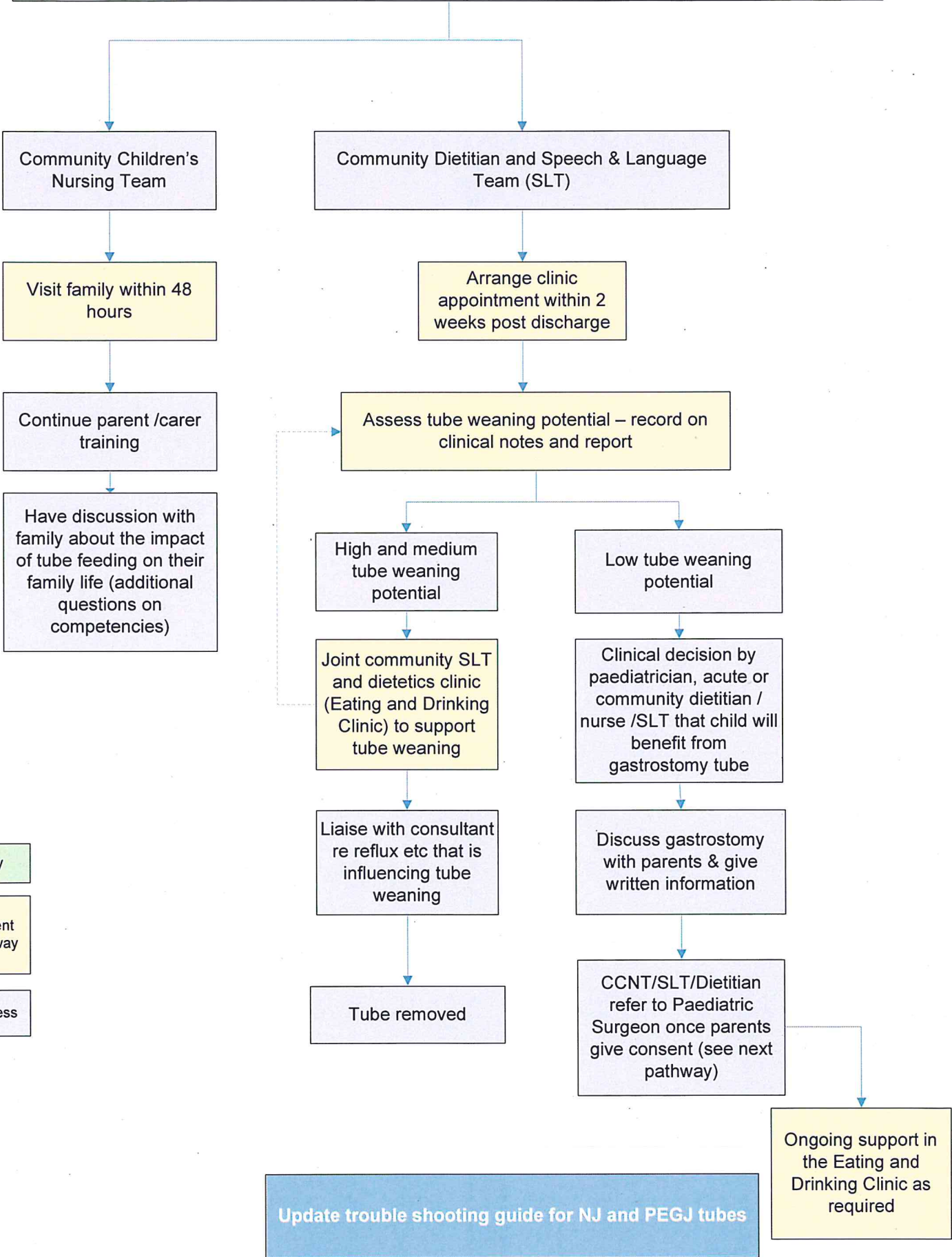


1. Child identified as needing tube feeding



2. Community management of child with NG/NJ tube

Receipt of discharge summary by CCNT (via fax 02081214425 or email: ccnt@bartshealth.nhs.uk), community Dietitian (via email) and community SLT (via email)



Key

Patient pathway

Process

3. Referral pathway for gastrostomy tube insertion, change or removal

