

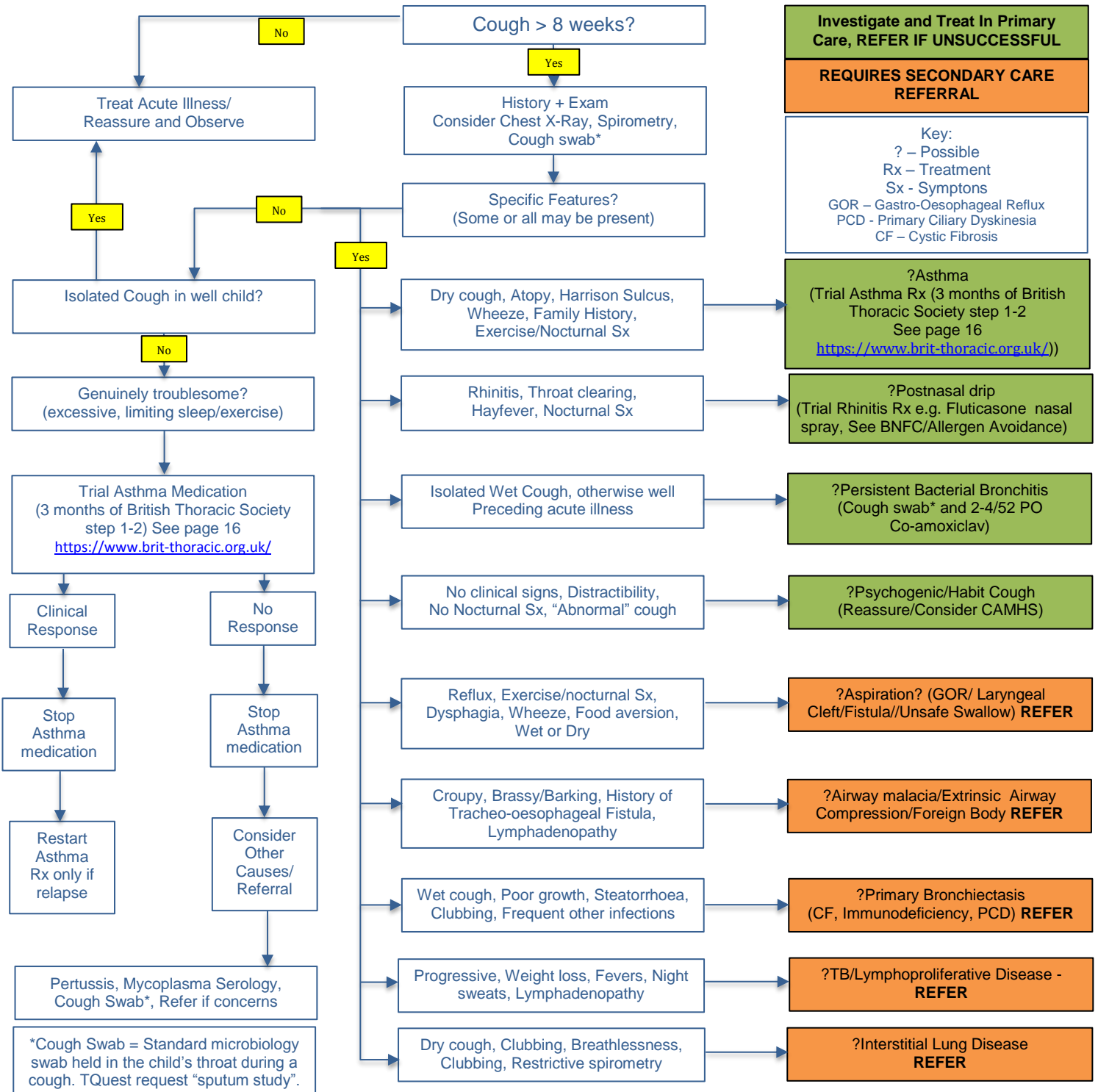
# Tower Hamlets Children and Young People Guideline

## Chronic Cough

**For advice and guidance, contact the Paediatric Hotline.**  
**Telephone number: 07919598173 or E-mail: BHNT.advice-paediatric-barts@nhs.net**

Definition: Cough persisting continuously > 8 weeks

- Cough is common and normal, especially in preschool children;
- Nocturnal cough is suspicious;
- Most cough is self-limiting, caused by viral URTI, watchful waiting and reassurance is sufficient;
- Quality, duration, and associations of cough are key to diagnosis and management.



## Tower Hamlets Children and Young People Guideline *Chronic Cough*

### Document Control Information

This document was created collaboratively between Tower Hamlets CCG and Barts Health NHS Trust. The document has been approved locally for use within the London Borough of Tower Hamlets.

<b>Lead Author</b>	Dr Nwokoro	<b>Author Position</b>	Paediatric Consultant, Barts Health NHS Trust
<b>Additional Contributor (s)</b>	Matthew Richardson, Administrative Support Julia Moody, GP and THCCG Clinical Lead		

<b>Approved By</b>	Julia Moody, December 2017		
<b>Approved By</b>	Mamta Vaidya, December 2017		
<b>Approved By</b>	Lynn Torpey, December 2017		
<b>Approved By</b>	NELCSU Prescribing Delivery Board, December 2017		

<b>Document Owner</b>	Tower Hamlets CCG Barts Health NHS Trust		
-----------------------	---	--	--

<b>Document Version</b>	1.0	<b>Replaces Version</b>	-
-------------------------	-----	-------------------------	---

<b>First Introduced</b>	January 2018	<b>Review Schedule</b>	Annual
<b>Date approved</b>	December 2017	<b>Next Review</b>	January 2019

### Document Overview

This document acts as a guideline and advises on the pathway and procedures which need to be followed when diagnosing and referring patients for treatment. This guideline should be used in conjunction with the users' clinical judgement.

<p><b>Safeguarding</b></p> <p>Concerns about Safeguarding should be managed as per LSCB/London Child Protection Procedures and Click <a href="#">Here</a> NICE Guidance to be used where appropriate. - <a href="https://www.nice.org.uk/guidance/cg89">https://www.nice.org.uk/guidance/cg89</a></p>
---

<p><b>Investigations</b></p> <p>Investigation names and acronyms marked with * are noted as per the TQuest system input.</p>
--

<p><b>Co-Amoxiclav Information.</b></p> <p>Microbiology has authorized the use of co-amoxiclav in the specific situations within this guideline.</p>
--