

Monitored Dosage Systems (also known as blister packs) Prescribing Protocol for City & Hackney practices

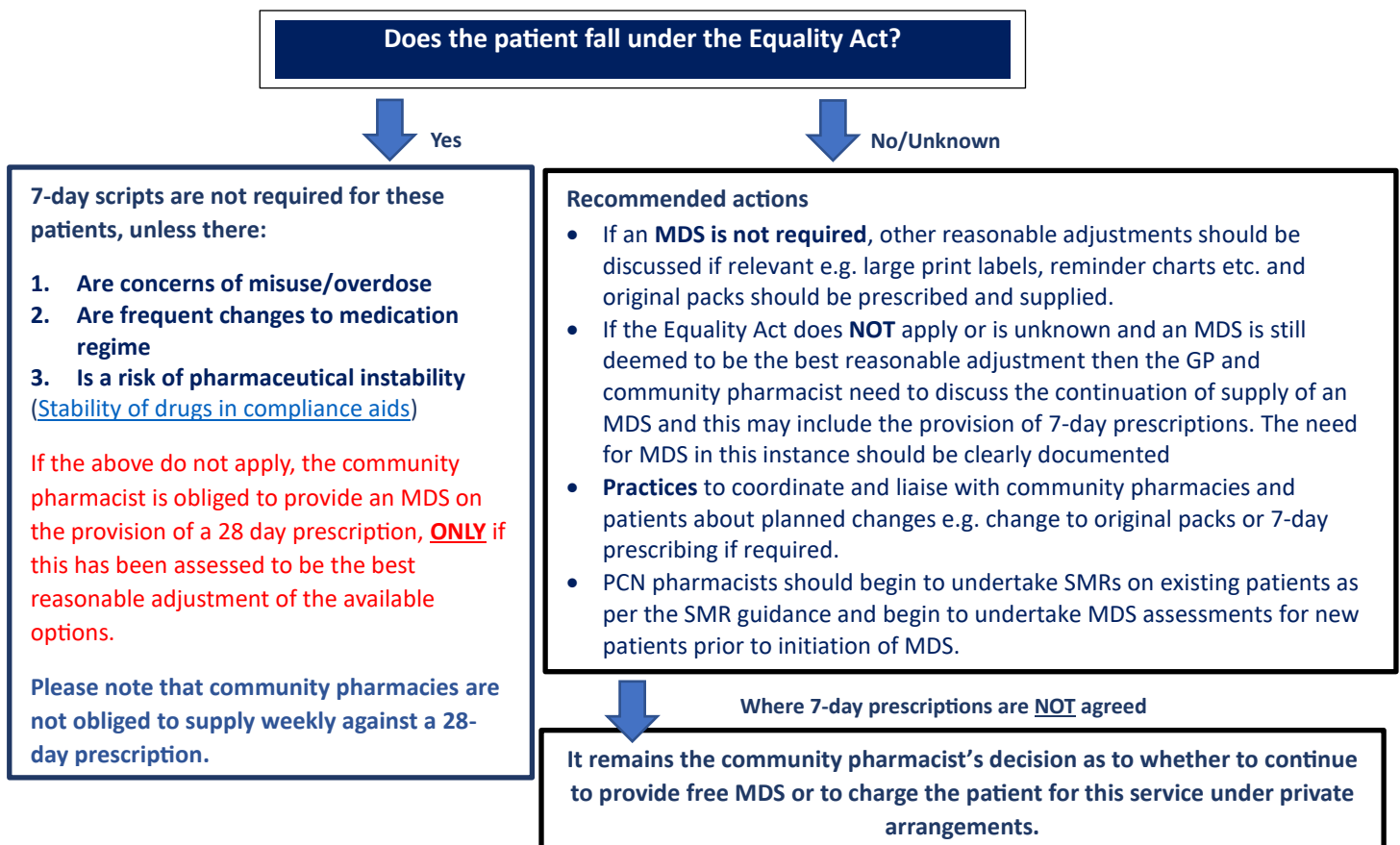
The C&H Medicines Optimisation Team have received a number of queries from practices with regards to the request for 7-day prescriptions from community pharmacies, this on the back of notification that the NHSE commissioned Monitored Dosage System (MDS) community pharmacy service is ending. This document is not new guidance and aims to clarify the process for managing prescription requests from pharmacies for MDS patients- this process can be supported by your PCN pharmacists.

The NHS does not fund pharmacists to routinely dispense medicines in MDSs. Under the pharmacy contract funding arrangements, where a patient has been assessed by the community pharmacist under the Equality Act 2010 (formerly known as the Disability Discrimination Act) and an MDS has been assessed as appropriate and required, funding for such a supply is already available as part of the pharmacy contractual practice payment. MDSs are not the only intervention to support management of patients' medicines. The pharmacist may suggest other reasonable adjustments to support a person to take their medicines e.g. easy opening tops, reminder charts, large print/braille labels etc

The NHSE commissioned MDS community pharmacy service will cease on 31st March 2023 and pharmacy contractors have been advised by NHSE to refer to the 'Guidance on NHSE Monitored Dosage System (MDS) scheme in City and Hackney' which was communicated by the C&H Local Pharmaceutical Committee to all C&H community pharmacies in March 2022. This guidance has also been previously sent to C&H general practices by the C&H Medicines Optimisation Team on 6th September 2021 (a further update was also sent on 30th March 2022). As NHSE funding for MDS is ending, practices & PCNs should agree a prescribing protocol for patients who require an MDS to help with medication adherence and to also manage prescription requests from community pharmacies.

Prescribing for Patients already on NHSE commissioned MDS and newly initiated patients:

The community pharmacist and GP practice need to discuss if the Equality Act criteria applies for patients on the NHSE scheme and determine if the requirement for an MDS is the best reasonable adjustment.



The following suggested MDS prescribing protocol should be adopted and PCN pharmacists can cascade this to their PCN practices as well as community pharmacies in their locality:

- If a patient has been assessed by the community pharmacist and falls under the Equality Act - **28 day prescriptions** should be issued to the pharmacy (with exclusions per C&H MDS guidance – see above flow chart)
- If they do not fit the Equality Act criteria then **7-day prescriptions** can be issued where the patients' GP and community pharmacy agree an MDS is necessary for the patient. Both parties to agree a review period to assess ongoing need.

GP Practice actions:

1. Agree prescribing protocol with local community pharmacies
2. Code patients with a dispensed MDS with:
 - a. "**Medicines dispensed into a dosette box**" as a Problem or Health Admin in EMIS and additionally
 - b. "**Requires reasonable adjustment for health and care access (Equality Act 2010)**", which can be grouped with (linked to) the dosette box code above.
3. Add freetext "28-day Rxn" or "7-day Rxn", so that it is clear to prescribers whether the patient should be having 28-day or 7-day prescriptions.
4. Document reason why it is deemed appropriate for patient to be on MDS
5. The Equality Act assessments for eligibility of MDSs are undertaken by the patient's community pharmacist. However, practices can support this process by communicating via secure email any significant and relevant information that may inform a patient's Equality Act assessment.
6. Periodic assessment, at medication review, of the need for the MDS

Community Pharmacy actions:

1. Inform the practice which compliance aid a patient requires and / or has been provided
2. Inform the practice whether the patient falls under the Equality Act 2010 (and the reasons why the patient falls under the Equality Act or not)
3. Periodic assessment of the need for the MDS (minimum: annual frequency advised)

Please refer to the Guidance on NHSE Monitored Dosage System (MDS) Scheme in City and Hackney last circulated to C&H community pharmacies and general practices in March 2022.

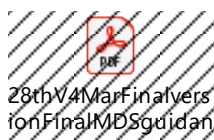


Figure 1: C&H MDS guidance (issued March 2022). PSP supported MDS assessments up until 31st March 2022

Further reference:

1. [SPS MCCA briefing May2019 final.pdf \(psnc.org.uk\)](#)